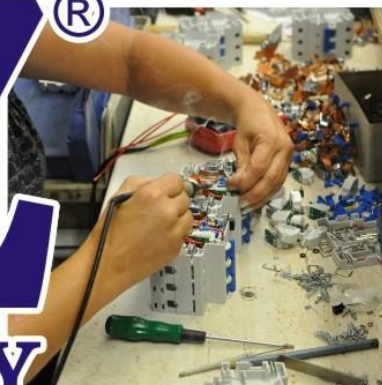


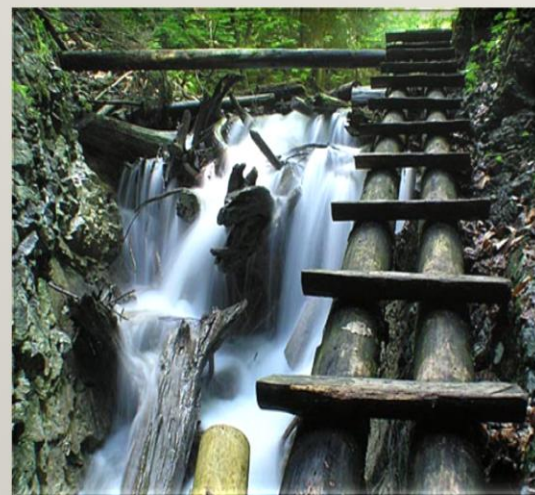
**SEZ<sup>®</sup>**  
**KROMPACHY**







# Location





# SEZ Krompachy a.s.





# Company profile

**Shareholder company SEZ Krompachy a.s. has been on the electrical market since 1948 and become a well-established manufacturer and developer of low and medium voltage products for conducting the current and devices against electrical hazards. Tools and moulds are being produced in its own toolshop. Subsidiary SEZ Plaset s.r.o. produces plastic moulds.**



# Company profile



## Main Activities

- Development and production of electrical devices
- Development and production of tools and moulds
- Production of mechanical parts and devices
- Production of plastic Moulds
- Distribution Boards
- Galvanization
- Fire Galvanizing
- Education
- R&D

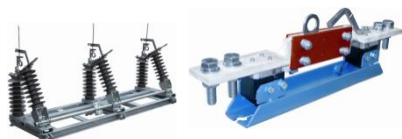


# Milestones



Foundation of the plant

**1948**



Development and manufacture of the third range of outdoor disconnectors OMI, OMZI, UVE, OVE, OJC

**1993-1994**



Development and manufacturing of the fifth range of circuit breakers PR60

**1998**



Development and manufacture of outdoor disconnectors OJC-Ž, UVE-Ž

**2004**

**1992**

Establishment of joint stock company SEZ Krompachy



**1997**

Development and manufacture of the third range of cam switches



**2003**

Development and manufacture of compact switches K16J, K32J



# Milestones



Segmentation of production:  
Rationalisation of logistic and  
technological processes

**2005**



Development and  
manufacture of 4 pole RCCB  
type PFB4

**2010**



Development and  
manufacturing of cam  
switches range 6-10A, 32-40A

**2011**

**2005**

Foundation of private  
eletrotechnical high school



**2006**

Development and manufacture of  
RCCBs with overcurrent protection  
PFI 2



**2010**

Technological modernization of the  
plant: launch of semi automatic line  
for circuit breaker production



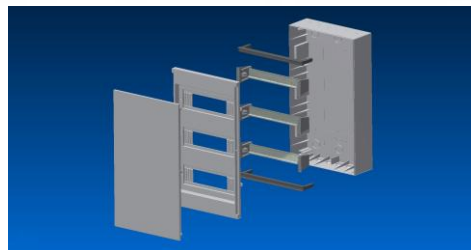


# Milestones



Development and  
Manufacturing of 2nd range of  
circuit breakers up to 125A

**2012**



Modular enclosure and  
elektromer distribution box

**2014**



Protection against birds sitting  
on consols

**2015**

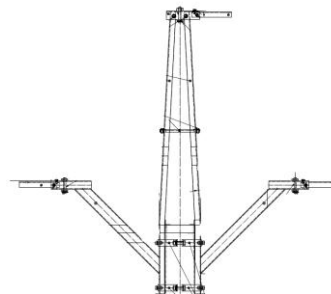
**2013**

Development and manufacturing  
of 4pole RCBO PFI4



**2015**

- Ecological consols for protecting birds (Eco-Bird)
- Ecological consols (Eco-protect)



# SEZ Group

- **Holding, a.s.**
- **SEZ Krompachy a.s.**
- **SEZ-Holding s.r.o. Šurany**
- **SEZ Plaset s.r.o.**
- **Zinkoza a.s.**
- **SBS SEZ s.r.o.**
- **SSOŠ SEZ Krompachy**



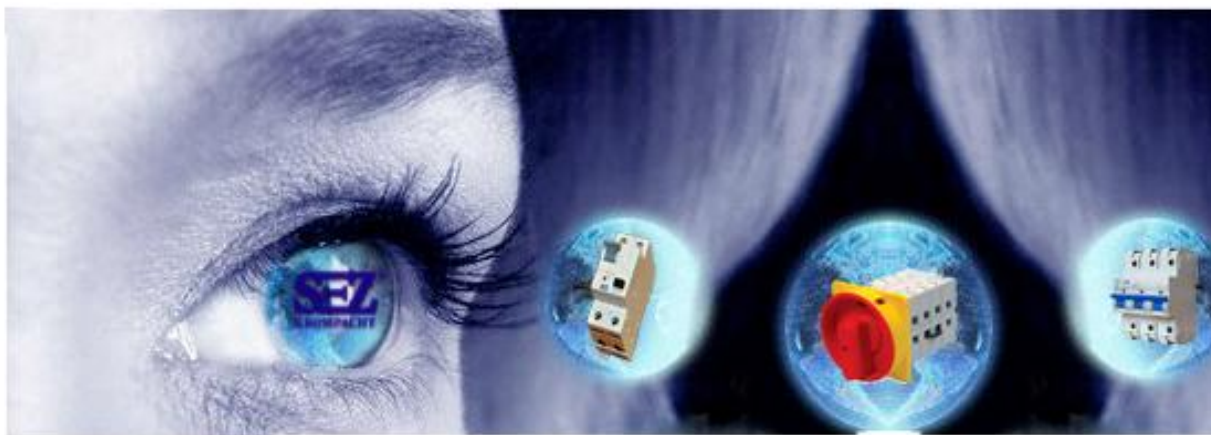
- **SEZ Bulgaria, Varna**
- **SEZ Ukrajina, Kyjev**





# Vision

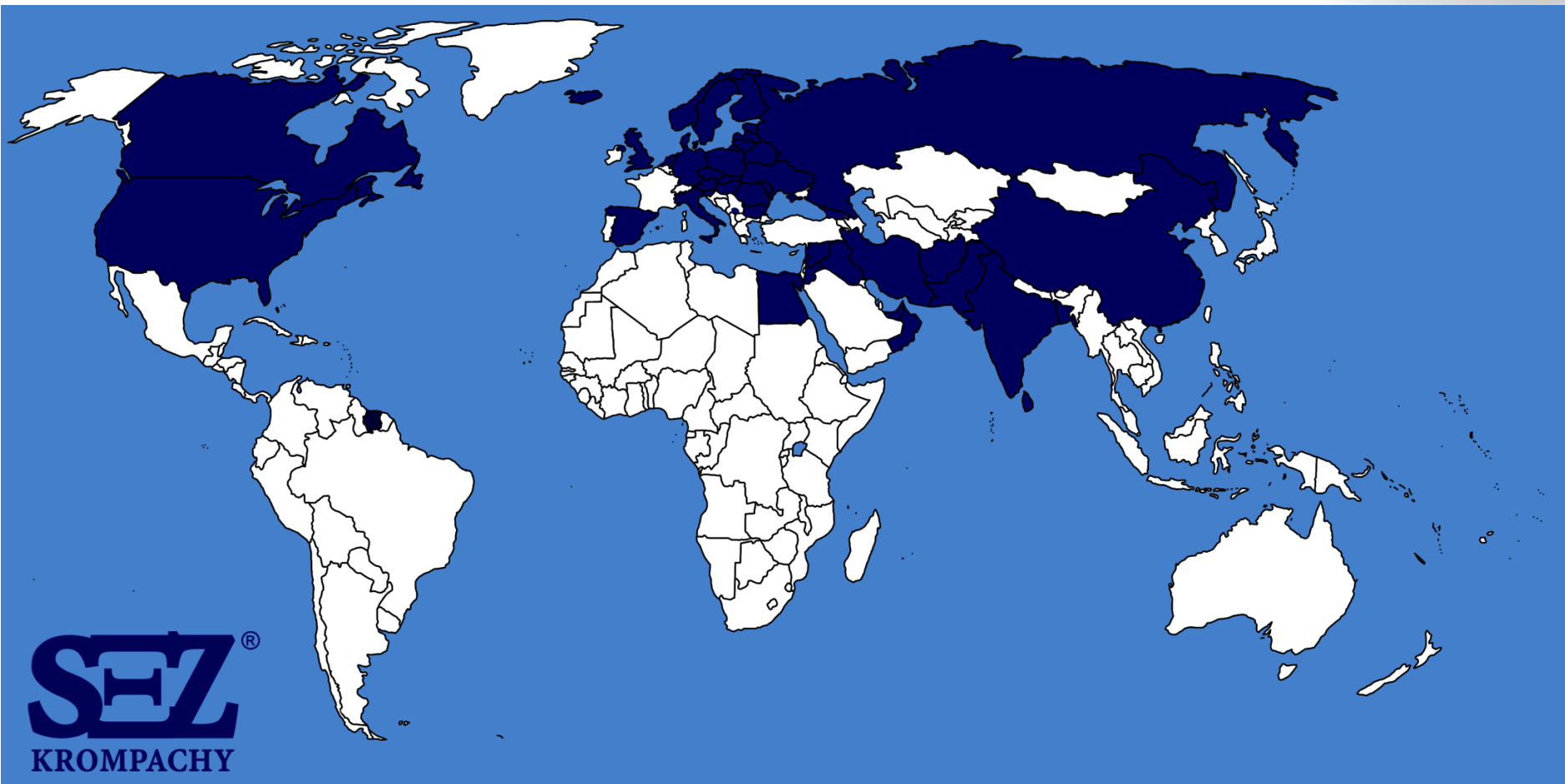
**The company's vision is to be a  
constantly competitive,  
creative and price competitive  
supplier of electric devices**



**to achieve this vision the company is prepared to supply its high-quality products and services  
according to the increasing needs of its customers,**

**SEZ Krompachy a.s. promotes the ethical standards of the company's behavior towards its  
employees, customers, all the partners and the environment in all of its activities**

# Export

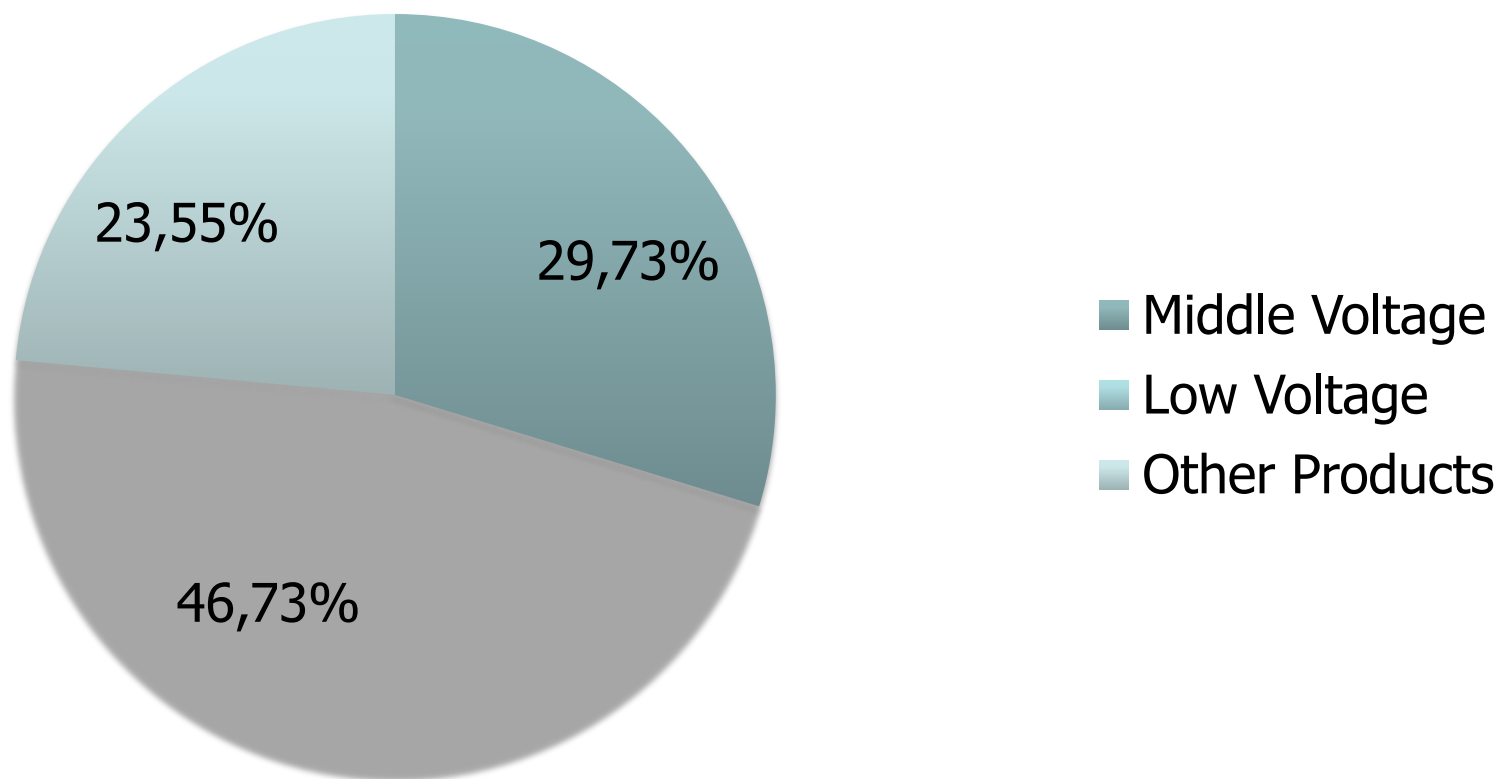


Germany, Austria, GB, Holland, Denmark, Finland, Sweden, Norway, Iceland, Poland, Hungary, Czech Republic, Ukraine, Latvia, Lithuania, Estonia, Russia, Belarus, Slovenia, Bulgaria, Italy, Spain, Romania, Kosovo, Georgia, Syria, Jordan, Egypt, UAE, Oman, Iraq, Iran, Pakistan, Afghanistan, Lebanon, Sri Lanka, India, Bangladesh, China, USA, Canada, Georgia



# Manufacturing program

## Manufacturing Structure



# Manufacturing program

## Low voltage devices



**MCBs PR60**



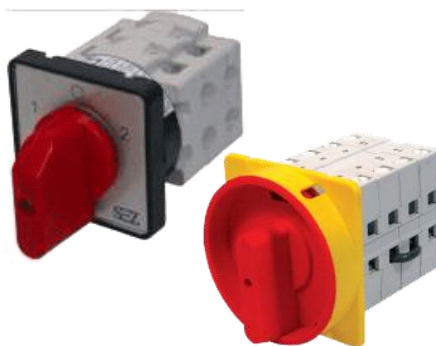
**MCBs PR120**



**RCCBs PFB**



**RCBOs PFI**



**Cam Switches**



**Compact Switches**



# Manufacturing program

## Low voltage devices



**Distribution Boards**



**Panel Building**



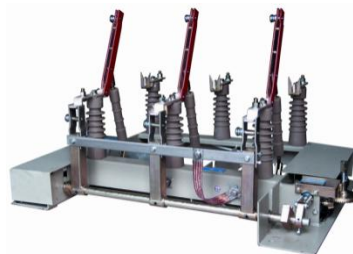
**House  
Switches & Sockets**

# Manufacturing program

## Medium voltage devices



**Outdoor  
Disconnectors and  
Switches**



**Indoor  
Disconnectors**



**Distribution Boards  
for railway tractions**



# Technological possibilities



## Plast Molding Facility

### Molding of plastic briquettes by injection

Used materials: ABS, PA, PBT, PC, formaldehyd gum

Injection press with closing force from 200 to 4400 kN, Max. injection capacity 15 – 2000 cm<sup>3</sup>

Max injection weight – 12 -1850g

Compression presses, press force from 800 to 2000 kN

Press Trade Marks : Arburg, Boy, Kraussmaffei, PAY, CBJ, CS, CSB, KM

#### OTHER EQUIPMENT:

- Mill equipment
- Substance dryer
- Briquet press
- Garbage disposal

# Technological possibilities



## Metal Pressing Factory

**Manufacture of flat wrought components from Fe, Cu, Ms, a Al thickness 0,1 to 8 mm**

### **MACHINES:-**

- simple, progressive ,compound and associated machines
- modern high speed automats BRUDERER, BIHLER

## Metal Processing Factory

**Manufacture components by cutting operation**

### **MACHINES:-**

single-spindled revolver and longturned machines,as well as at multi-spindled high power lathe machines

- CNC TRAUB, CNC PUMA

-central,revolver and finishing lathes, hobs, drills, grinders and curve cutters

### **Production of carbon type components:**

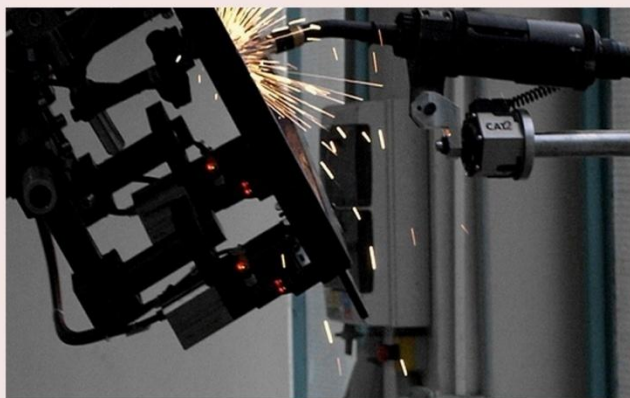
at copying lathes with pre-preparation at drilling machine

### **Exact contour components**

at dejecting and revolver NC lathes SPRY



# Technological possibilities



## Other Technologies

### **Curved welding – production of tin containers**

- Welding rectifier
- Semi automats
- Low carbon steels are welded by using electrodes with acid and alkaline cover without pre heating, In CO<sub>2</sub> atmosphere

### **Drag spot welding – production of set up by spot welding**

- Pneumatic spot welding machines, pneumatic micropointers
- Surface treatment by colours application
- Application of syntetic, nitrocellulose and burning coating compositions by spraying,soaking and by brush

# Technological possibilities



## Tool Shop

**Forms for plast molding sets, pressure pouring of Al, gum**  
**Forms for every molding types, max. ground plan size 800x800 mm**

### Molding Machines

- Classical tool machine
- Electrosparking excavators
- Electrosparking wire cutters
- Coordinate grinder
- Copying milling machine
- NC milling machine
- Complex control-technological equipment for measuring

**3D Software: SOLID EDGE, UNIGRAFIC, INVERTOR 8**



# Technological possibilities



## Galvanizing

- Mass and stationary galvanizing with chromodizing**
- Mass and stationary silvering and nickeling**
- Mass tinning and coppering**
- Automatized galvanizing processes**



# Technological possibilities



## Firing Galvanizing

- Progressive, modern and advanced technologically solution for steel and metal anticorrosion
- Galvanizing protect against mechanical damages during transportation, manipulation, storage and assembling
- Galvanizing tub dimensions: 6,8x1,4x2,2m
- The thickness of the surface layer: 50-150  $\mu\text{m}$
- All the galvanized products are recyclable and environmentally friendly

# Certification

**CCA**  
**VDE**  
**ZKU**  
**EGU**  
**GOST-R**

**SKTC Nová Dubnica**  
**EZU Praha**  
**CB**  
**UL 508, 1077, 489**

[illegible][illegible]

**SEZ Krompachy, a.s.**  
**Hornadska 1**  
**05342 Krompachy**  
**Slovakia**  
**[www.sez-krompachy.sk](http://www.sez-krompachy.sk)**